



INSTRUMENTARIUM



OP300

OP200 D

OC200 D

OP30

VT

FOCUS™

SNAPSHOT™

EXPRESS™

CLINIVIEW™



Imaging solutions for professionals.
Instrumentarium Dental products



ID

Instrumentarium Dental

For the past 50 years Instrumentarium Dental has been pioneering imaging systems designed for professionals. From the original ORTHOPANTOMOGRAPH® OP1 to the complete offering of today's advanced imaging systems, our years of experience guarantee our customers a safe investment in their future.

E

Solutions for extraoral,

- ORTHOPANTOMOGRAPH® OP300 for advanced 3D, panoramic and cephalometric imaging
- ORTHOPANTOMOGRAPH® OP200 D for advanced digital panoramic imaging
- ORTHOPANTOMOGRAPH® OP30 for standard digital panoramic imaging
- ORTOCEPH® OC200 D for advanced digital cephalometric imaging
- VT – Volumetric Tomography option for digital ORTHOPANTOMOGRAPH® units
- ORTHOPANTOMOGRAPH® OP200 for panoramic imaging (film unit)
- ORTHOCEPH® OC200 for cephalometric imaging (film unit)

3D

Solutions for intraoral

- SNAPSHOT™ sensors for advanced direct digital intraoral imaging
- EXPRESS™ digital imaging plate system
- FOCUS™ X-ray, a high-frequency intraoral DC unit

Software

CLINIVIEW™ dental diagnostic imaging software

Solutions for 3D imaging

- ORTHOPANTOMOGRAPH® OP300 for advanced 3D, panoramic and cephalometric imaging

Imaging solutions for professionals.



ORTHOPANTOMOGRAPH® OP300

3D • panoramic • cephalometric



Choose your own ORTHOPANTOMOGRAPH®

	OP30	OP200	OP300
Standard panoramic	•		
Advanced panoramic		•	•
TMJ imaging	•	•	•
Volumetric Tomography		•	
CB3D			•
Cephalometric		•	•

ORTHOPANTOMOGRAPH® OP300 is the most comprehensive 3-in-1 platform designed for today and tomorrow. OP300 combines an advanced panoramic imaging system with either cephalometric or cone beam 3D or a combination of both, giving you a truly adaptable platform. In addition, all of these options can be upgraded in the field after the initial purchase.

- Gold standard image quality
- Multilayer pan
- Confident diagnosis
- Complete versatility

Leading the way through the decades.

A platform for changing needs.

ORTHOPANTOMOGRAPH® OP200 D

Advanced panoramic imaging system

ORTHOPANTOMOGRAPH® OP200 D

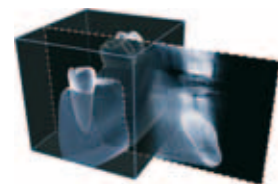
- Versatile imaging programs
- Accurate and stable patient positioning
- Correct imaging values – automatically

ORTHOPANTOMOGRAPH® OC200 D

- Adjustable exposure area and reduced dose
- Patented Automatic Facial Contour (AFC) soft tissue enhancement
- Clinically correct imaging geometry
- Full range of projections
- Available both right and left-handed

VT – Volumetric Tomography

- Cross-sectional option for OP200 D
- Easy selection of region of interest



A proven leader in panoramic imaging.



ORTHOPANTOMOGRAPH® OP30

Digital panoramic imaging system

ORTHOPANTOMOGRAPH® OP30 is a digital panoramic X-ray unit designed for every dental office and small imaging centers demanding a top quality digital panoramic system at a competitive price. OP30 truly continues the legacy of the well-known ORTHOPANTOMOGRAPH® product family.

- ORTHOPANTOMOGRAPH® image quality
- All the essentials included
- Stable patient support and three positioning lights
- Pan, pediatric pan, TMJ imaging programs
- V-shaped beam

Design and quality.



EXPRESS™

Digital imaging plate system

EXPRESS™ is a digital imaging plate system for intraoral radiography. It lends itself to all types of dental practices and intraoral imaging needs. The fluent film-like workflow helps produce superb, consistent clinical results fast and with ease. EXPRESS™ can be shared with multiple users over a network and is a safe investment for long lasting-performance.

- Suberb results. Fast.
- Smooth workflow
- All-in-one system
- A safe investment



Seamless performance.

SNAPSHOT™

Intraoral sensors

SNAPSHOT™ is a truly portable direct digital intraoral sensor which provides best-in-class clinical results for dental radiography. SNAPSHOT™ sensors lend themselves to all types of dental practices and intraoral imaging needs.

- Best-in-class clinical results
- Designed for the patient
- Set it and forget it
- Truly plug and play
- Truly portable sensor with a small footprint



One shot. Perfect image.



F FOCUS™ Intraoral X-ray

FOCUS™ X-ray with Anti-Drift mechanism is a premium quality high-frequency intraoral DC unit. An ideal tool for demanding dental professionals.

Good, better, FOCUS™

- Premium quality intraoral DC X-ray unit
- Exceptional stability, yet smooth movement
- Anti-drift mechanism (ADM)
- Extremely long arm reach
- DAP display

Focus on your patient.

C CLINIVIEW™ Dental imaging software

CLINIVIEW™ is an easy-to-use software with powerful functions for digital image capturing, viewing, printing and storage, including a wide range of dental specific image enhancement tools. CLINIVIEW™ software supports image capturing from all Instrumentarium products. In addition, images can be imported or scanned from a wide range of other digital sources.

- A wide range of dental specific imaging enhancement tools
- Open connectivity to IT environment and DICOM®* compatibility
- Supported image file formats: png (16 bit), bmp, jpeg and tiff
- Operating Systems: Windows® 7 (32-bit and 64-bit), Windows® Vista (32-bit and 64-bit), Windows® XP (32-bit)

** DICOM® is the registered trademark of the National Electrical Manufacturers Association for its standards publications relating to digital communications of medical information.*

Fast and accurate diagnosis.

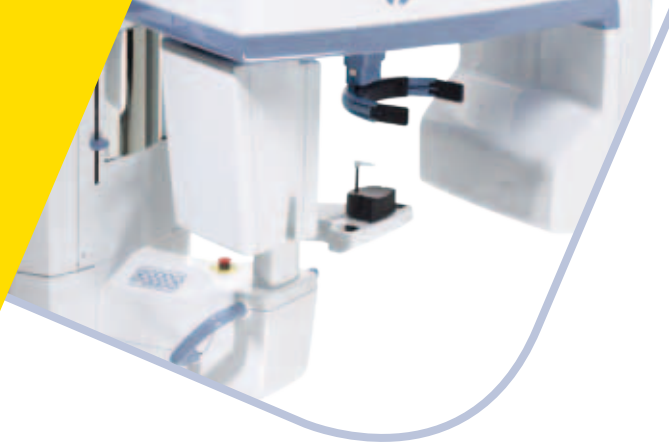


Headquarters

Instrumentarium Dental
Nahkelantie 160
P.O. Box 20
FI-04301 Tuusula
Finland
Tel. +358 10 270 2000
Fax +358 10 270 2230

USA

Instrumentarium Dental Inc.
1245 W. Canal Street
Milwaukee, Wisconsin 53233
U.S.A
Tel. +1 800 558 6120
Fax +1 414 481 8665



Instrumentarium Dental develops, manufactures and markets high-tech systems and solutions for dental and maxillo-facial imaging. We work in close co-operation with dental professionals, universities and other research centers in our quest to develop solutions that will meet and exceed the expectations of our customers. As the establisher of panoramic X-ray imaging, we are committed to providing high clinical performance while still maintaining simplicity, ease of use and workflow efficiency.

The Instrumentarium Dental product portfolio consists of a full range of premium quality imaging solutions for intraoral, extraoral and 3D imaging. For more detailed information about our products, please visit www.instrumentariumdental.com.

Instrumentarium Dental reserves the right to make changes to specifications and features shown herein, or to discontinue the product described at any time without notice or obligation. Contact your Instrumentarium Dental representative for the most current information. CE marked according to Medical Device Directive (NB 0537). Electrical safety according to IEC 60601-1. Operations comply with ISO 13485:2003, ISO 9001:2008, and ISO 14001:2004.

ORTHOPANTOMOGRAPH®/SNAPSHOT™/EXPRESS™/ FOCUS™/CLINVIEW™ is a registered trademark/ a common law trademark of Instrumentarium Dental, PaloDEX Group Oy.

www.instrumentariumdental.com